

Editing and Saving MaxPaint Pictures



1. Click the Insert Picture  button.



2. Select a category.



3. Select a picture.



4. Click Ok  to insert picture.

5. Select Picture

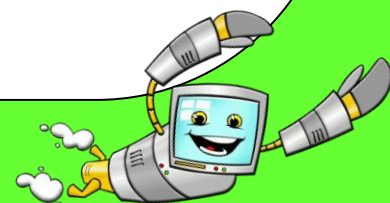



6. Click the MaxPaint  button to edit picture.



7. Select Stamps .


8. Select a stamp category.




9. Select a Stamp 

10. Click on canvas to insert stamp.



11. Select Save  to save picture in your personal clipart gallery.



12. Click OK  to close confirmation message.


13. Select Cancel  to return to document without inserting picture.

14. Select Picture and press Delete Key.



15. Click the Insert Picture  button.

16. Select Personal Clipart


Gallery 



17. The personal clipart gallery stores all the pictures that you have created in MaxPaint.

18. Select your Picture.



19. Click OK  to insert into document.

