

# Modifying a saved MaxPaint Picture



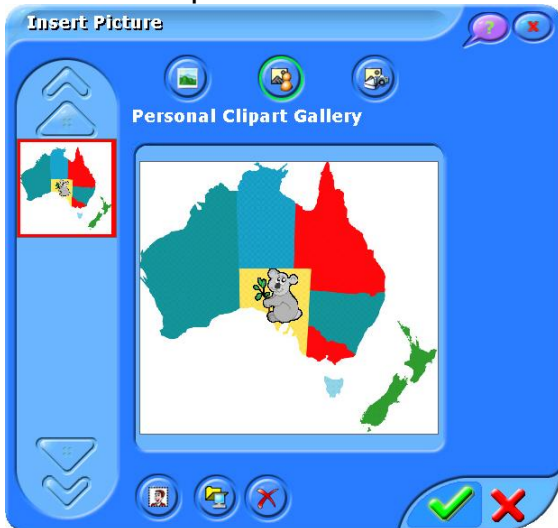
1. Click Insert Picture  button.



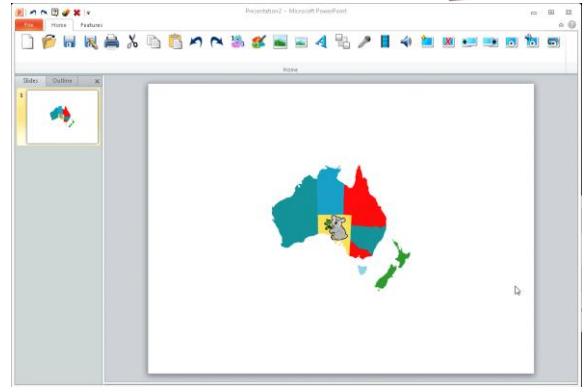
2. Select Personal Clipart Gallery .

3. The personal clipart gallery stores all of your pictures that you have created in MaxPaint.

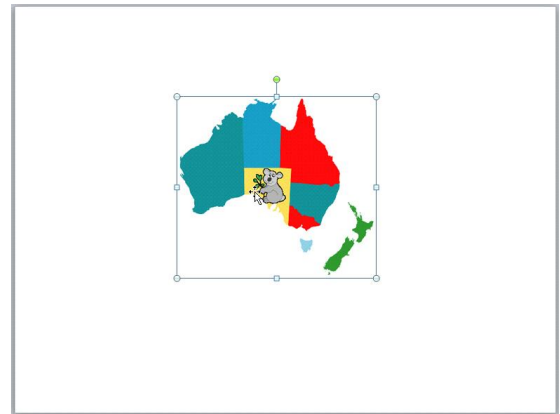
4. Select the clipart.



5. Click OK  to insert the clipart into the document.



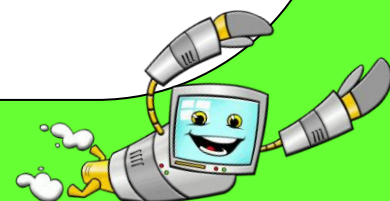
6. Select the picture so it can be edited in MaxPaint.



7. Click MaxPaint  button.





8. Edit MaxPaint picture.



9. Select Save to save new MaxPaint picture in your clipart gallery.

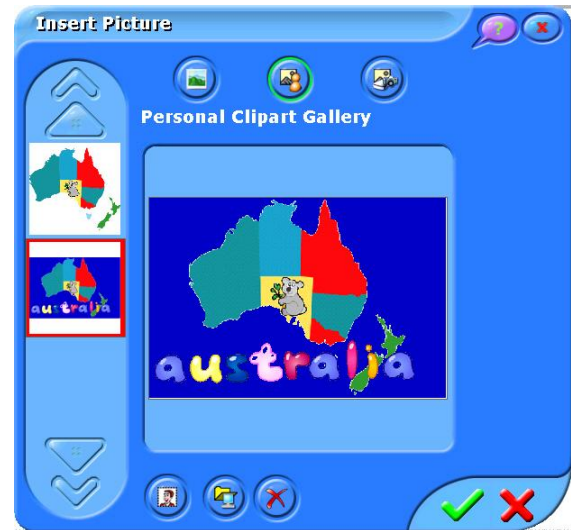


10. Click OK  on the Save confirmation message.
11. Select Cancel  to return to document without inserting picture document.
12. Select the picture and press Delete Key.

13. Click the Insert Picture  button.



14. Select updated clipart.



15. Select OK  to insert picture into the document.

